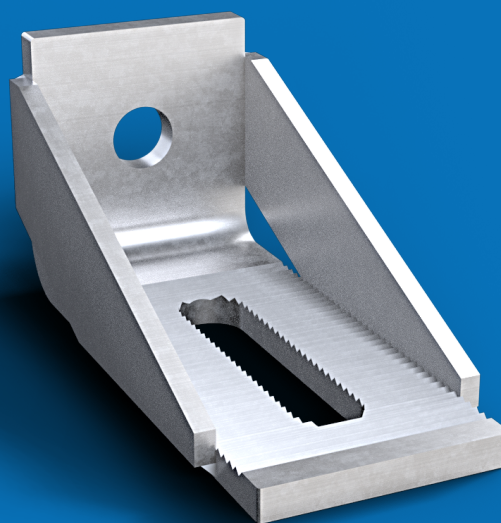


Accessory for retaining precast concrete elements. Mounting with NOXI profiles, FER screws TF16-40, FER washer AF8 / 16, Glower AG16 washers, A16 washer and T16 nut. With this system, assembly regulation is achieved in the 3 main axes.

Anchor UPA-C



Code	Description	L	Total length (L1)
UPA-C115	Anchor UPA-C length 115 mm	70 mm	115 mm
UPA-C145	Anchor UPA-C length 145 mm	100 mm	145 mm
UPA-C320	Anchor UPA-C length 320 mm	275 mm	320 mm

(*) Other lengths available under request..
For length L1 > 600 mm, ask us for the load

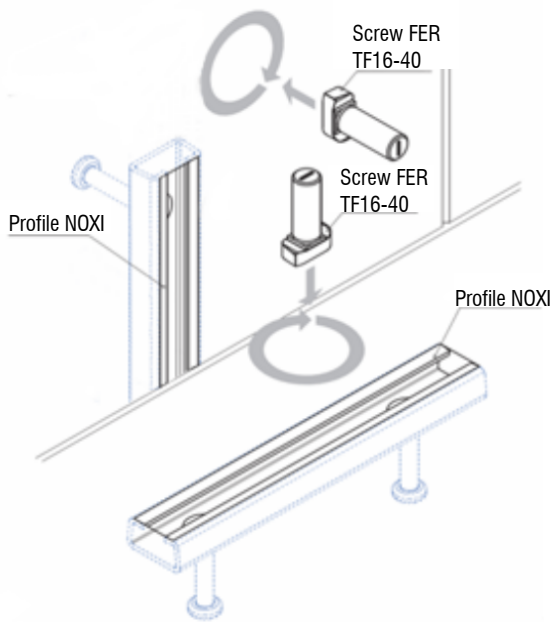
(1) **Surface treatment** Electroplated zinc coating
Service load 1300 Kg

www.noxifer.com



1. Other surface treatment available under request.

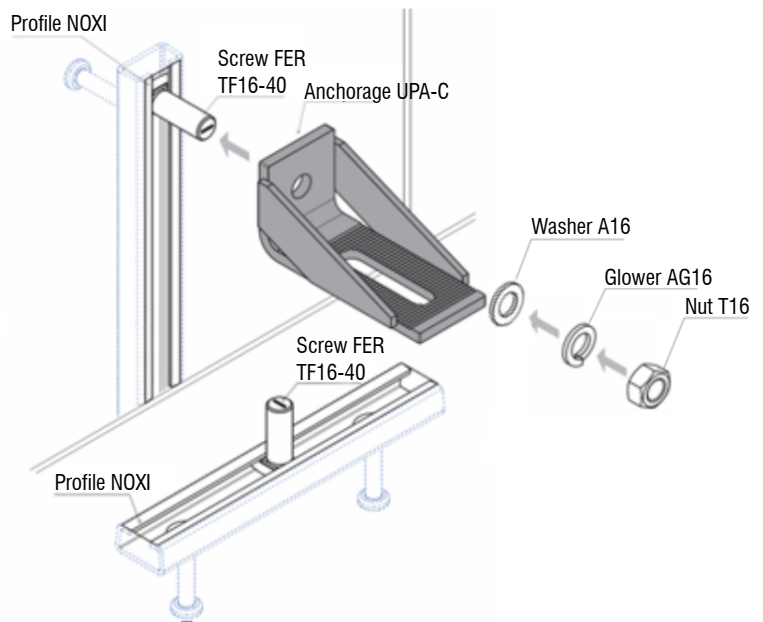
1



1.1.- Place the FER screws into the profiles* and turn it 90 degrees.

*The profile can be: NOXI C, R or S; depending on the load.

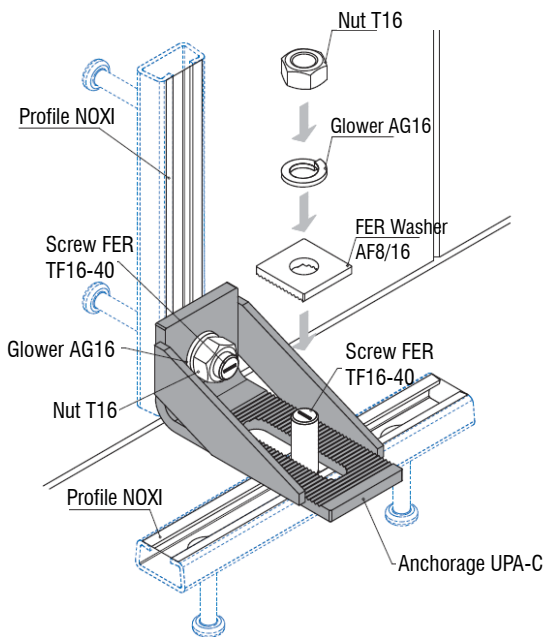
2



2.1.- Place the UPA-C accessory into screw through hole $\varnothing 17$, leaving the grooved size up.

2.2.- Fixing by A16 washer, AG16 Glower washer and T16 nut. The Glower washer should be completely flat.

3

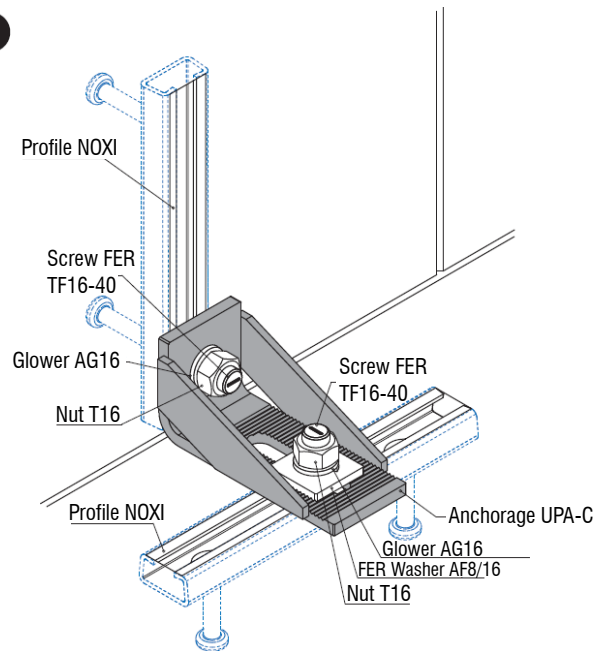


3.1.- Screw and anchor assembly through the $\varnothing 17$ slotted hole.

3.2.- Fixing by FER AF8 washer / 16, AG16 Glower washer and T16 nut.

3.3.- The FER washer must match with the UPAC's grooved zone.

4



4.1.- Tighten the nut to finish the assembly. The Glower washer should be completely flat.

4.2.- Final check and assurance of the tightening of the nuts.

In order to continue the assembly sequence all the steps above described must be successfully overcome.