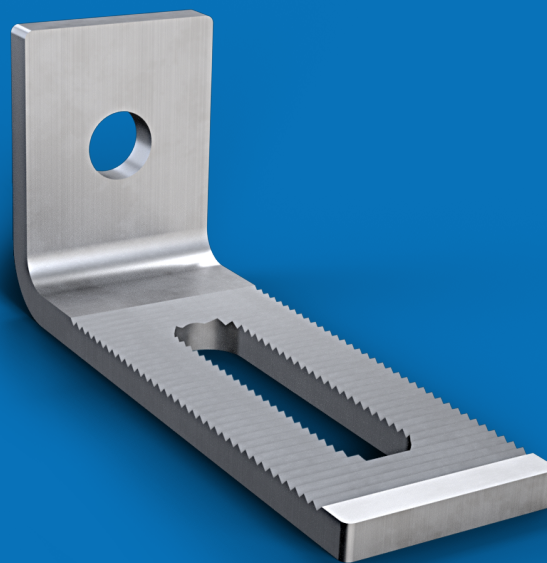


Accessory for retaining precast concrete elements. Mounting with NOXI profiles, FER screws TF16-40, FER washer AF6 / 16, Glower AG16 washers, A16 washer and T16 nut. With this system, assembly regulation is achieved in the 3 main axes.

Anchor UPA



Code	Description	L	Total length (L1)
UPA115	Anchor UPA length 115 mm	70 mm	115 mm
UPA145	Anchor UPA length 145 mm	85 mm	145 mm
UPA320	Anchor UPA length 320 mm	260 mm	320 mm

(*) Other lengths available under request.
For length L1 > 600 mm, ask us for the charge

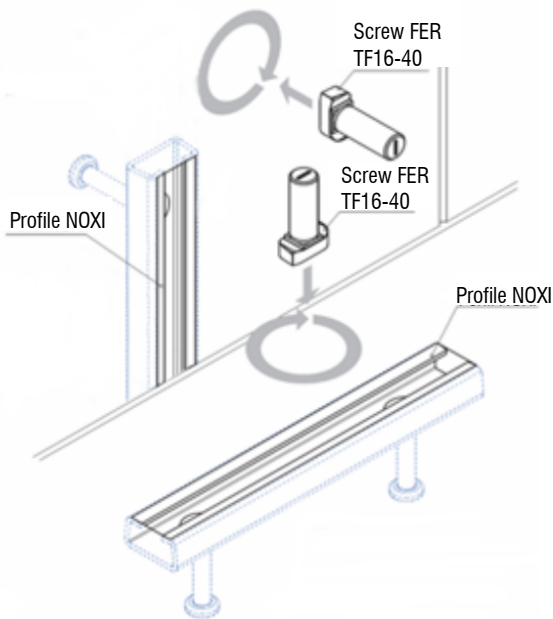
(1) Surface treatment Electroplated zinc coating
Service load 500 Kg
Global Security Coefficient 1.78

www.noxifer.com



1. Other surface treatment available under request

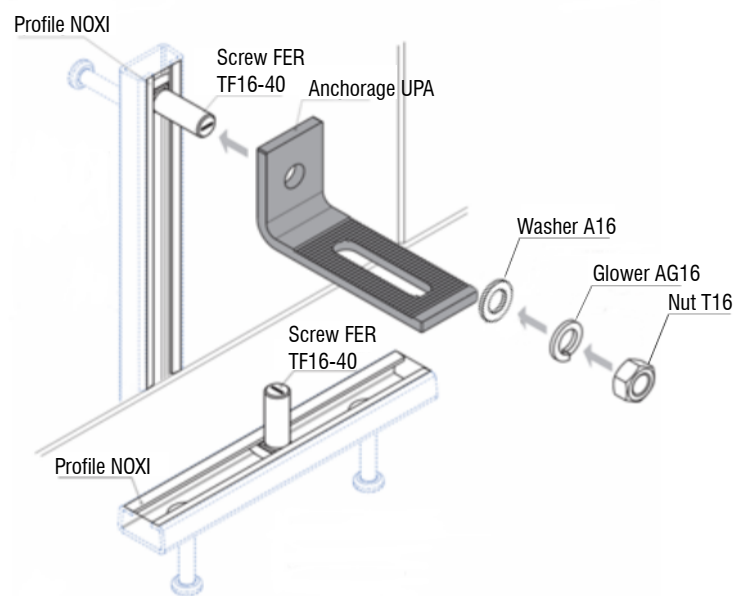
1



1.1.- Place the FER TF16-40 screws into the profiles* and turn it 90 degrees.

*The profiles can be: NOXI C, R or S; depending on the loads.

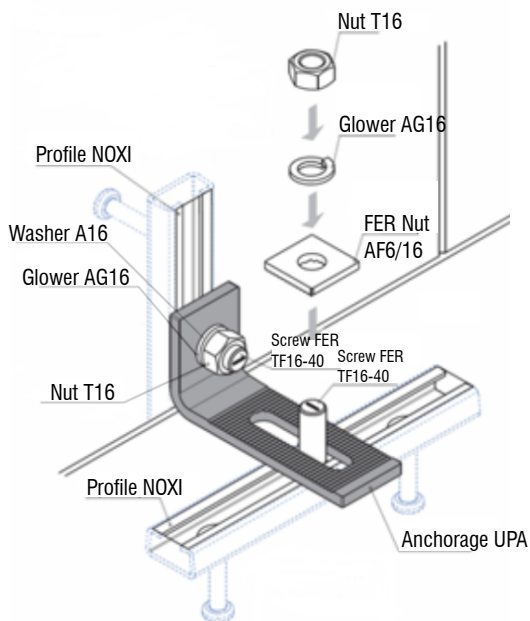
2



2.1.- Place the UPA accessory into screw through hole Ø17, leaving the grooved size up.

2.2.- Fixing by Glower AG16 washer and T16 nut. The Glower washer should be completely flat.

3

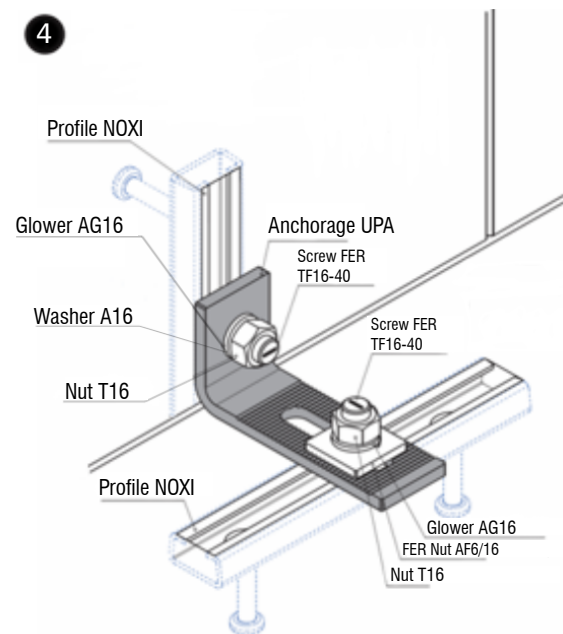


3.1.- Screw and anchor assembly through slotted hole Ø17.

3.2.- Fixing by FER AF6 / 16 washer, AG16 Glower washer and T16 nut.

3.3.- The FER washer must match with the UPA's grooved zone.

4



4.1.- Tighten the nut to finish the assembly. The Glower washer should be completely flat.

4.2.- Final check and assurance of nut tightening.

In order to continue the assembly sequence all the steps above described must be successfully overcome.