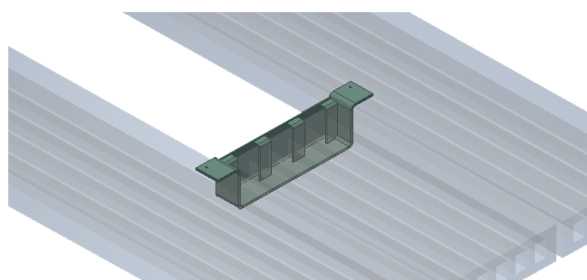


Example of assembly of a simply supported SOPRA.

The dimensions, plate thickness and number of reinforcements are defined according to the project requirements.



Code	Description
SOPRA	Hollow-core slab support

**Material:** Steel S275JR

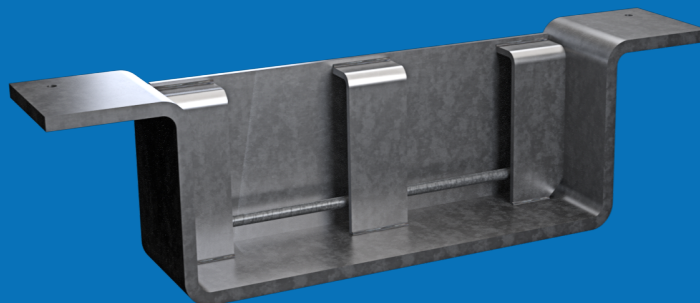
**Surface coating:** Priming  
Electrolytic zinc plating  
Hot-dip galvanized  
Stainless steel

**Service load:** Depending on the model

**Security coefficient:** 1,35 over yield stress

Support for hollow-core slabs to make openings on the floor slab for stairs, elevators...

## Hollow-core slab support **SOPRA**

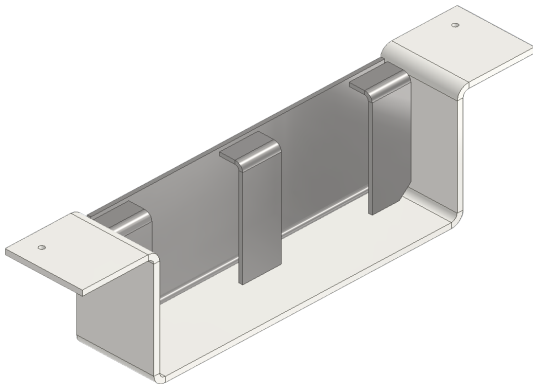


[www.noxifer.com](http://www.noxifer.com)

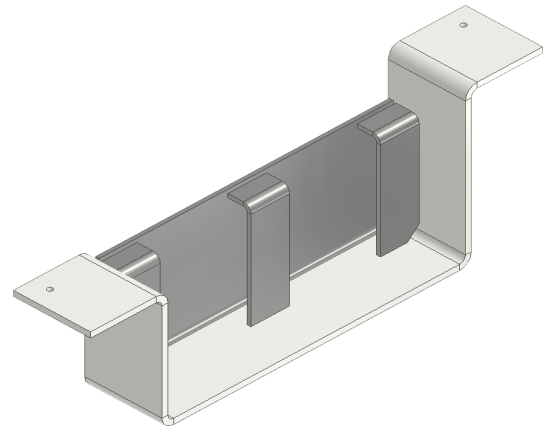


SOPRA can be simply supported on the hollow-core slabs, on a concrete wall or anchored to front part of a concrete wall. The SOPRA geometry is adapted depending on the case of study.

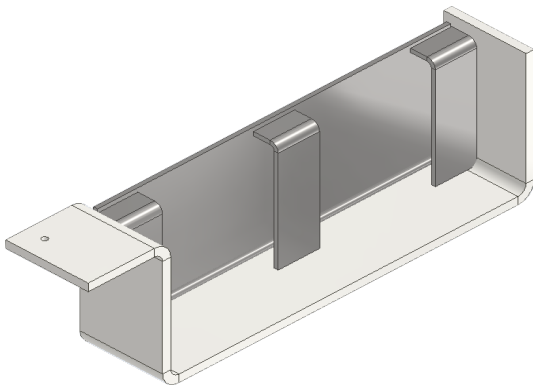
Simply supported SOPRA on two hollow-core slabs



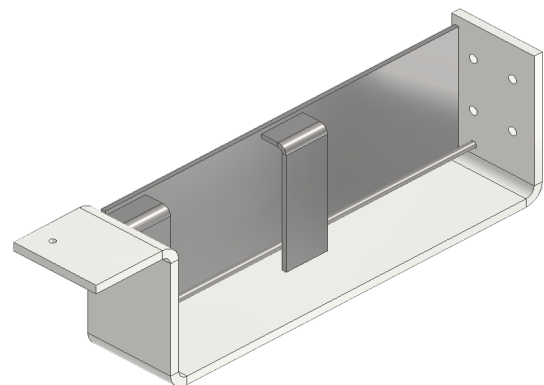
Simply supported SOPRA on two hollow-core slabs with different height



Simply supported SOPRA on a hollow-core slab and on a concrete wall



Simply supported SOPRA on a hollow-core slab and anchored to a concrete wall



It is necessary to ensure that SOPRA support is correctly placed on the hollow-core slabs (flanges sitting on the slab and fixed with an expansion anchor).

Next, the hollow-core slab must be placed keeping it in contact with the SOPRA's reinforcements.

Finally, the concrete is poured over the slab and hardened until reaching the characteristic resistance defined in the project.