

noxifer[®]

global building solutions

*Foundation
systems*

CUBIX[®]

***Non-recoverable
ribbed pocket for
a fast assembly***



Foundation system

embedded with keys

CUBIX is a ribbed pocked used as a non-recoverable formwork for embedding precast concrete structures. It is manufactured using DC01 steel sheet of 1mm thick.

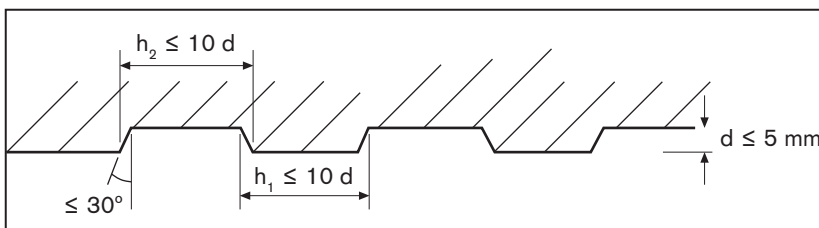


Advantages

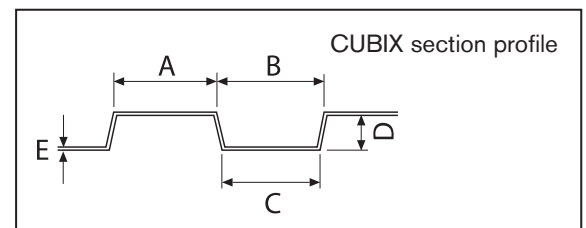
- Fast assembly and time reduction of foundation operations.
- Light and easy to handle.
- Clean installation. It does not generate any residue on the construction site.
- The ribbed profile provides a better adherence.
- It can work as a ribbed or smoothed pocket.
- It can be supplied assembled or disassembled and in different dimensions according to the project requirements.
- The special ribbed of the CUBIX permits a monolithic union between the column and the foundation.

Dimensions

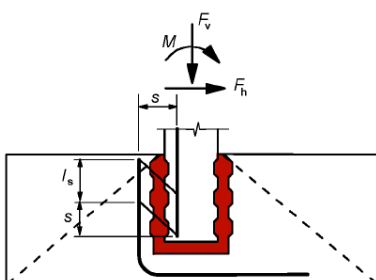
The dimensions of the CUBIX ribbed profile fulfill the requirements of the standard EN1992-1-1:2010 Article 6.2.5.



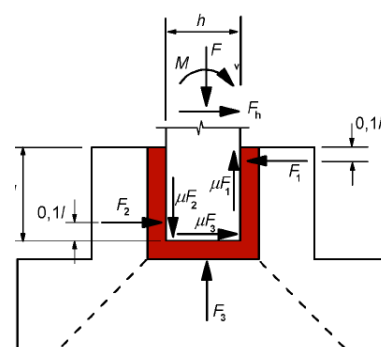
Ribbed according to Eurocode 2.



CUBIX ribbed.



Foundation with keyed joint surface.



Foundation with smooth joint surface.

CUBIX®



Excavation and reinforcement preparation.



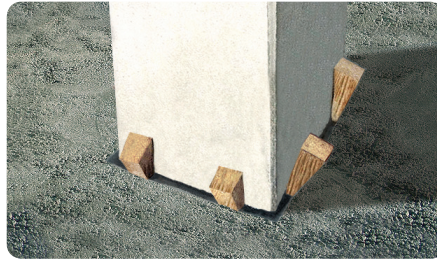
CUBIX placement.



Concrete pouring.



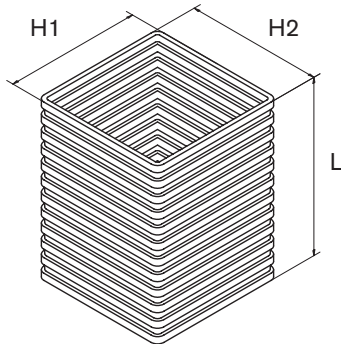
Concrete hardening.



Column placement.



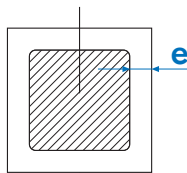
Joint concrete pouring.



CUBIX dimensions

H1 and H2 lateral dimensions depend on the column size and the type of concrete used in the pouring phase.

Structural element



CUBIX

Width (e)	GROUT	C20/25 or higher
	5 cm	7,5 cm

$$H1 = H1_{\text{pillar}} + 2e$$

$$H2 = H2_{\text{pillar}} + 2e$$

CUBIX assembled dimensions available

Examples of the most used dimensions (interior levels in millimetres).

H1	H2	Height (L)	H1	H2	Height (L)
500	500	<650	500	500	> 650 < 1000
500	600	<650	500	600	> 650 < 1000
500	700	<650	500	700	> 650 < 1000
550	550	<650	550	550	> 650 < 1000
600	600	<650	600	600	> 650 < 1000
600	700	<650	600	700	> 650 < 1000
700	700	<650	700	700	> 650 < 1000
			800	700	> 650 < 1000
			800	800	> 650 < 1000

The disassembled models have the same dimensions. Other levels, consult.

CUBIX are supplied assembled with the lateral levels and height specified by the client:

- The opening can be squared or rectangular.
- Laterals (H1 and H2) can be supplied between 400mm and 1000mm.
- Height (L) is adapted according to the client requirements.
- CUBIX with laterals higher than 700mm are supplied with interior reinforcements.
- CUBIX can be supplied with a welded cover on its base.

It is possible to supply the CUBIX disassembled if the client needs it.

www.noxifer.com



The company has extensive experience in manufacturing of steel parts and metallic structures for the precast concrete industry and industrialized construction.

This experience allows us to dialogue with customers and provide specific solutions to any development of product that arises.

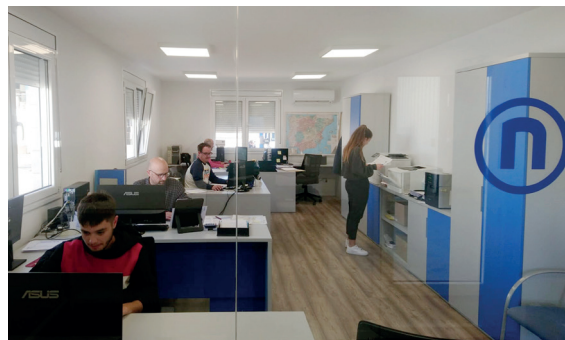
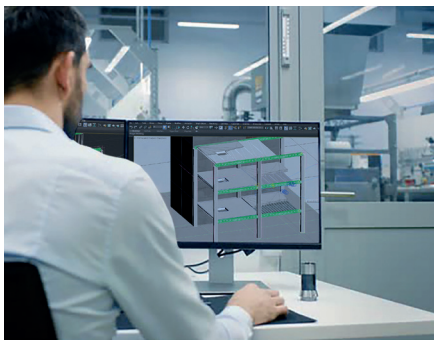
The constant innovation in production systems and the provision of the most modern technological tools place Noxifer at the forefront of new development of products completely adapted to the customer needs.

The high demands on certified quality that Noxifer applies at the time of product development, as well as the internal organization in the productive aspects and logistics, have allowed the company to gain customers' trust, serving them with the most high construction safety requirements, fast and efficient.

Noxifer's technical team constantly communicates with development centres and innovation in the construction sector.

Architects, engineers and construction companies are our referents. Together, we develop the new products they need in each of their projects.

www.noxifer.com



noxifer[®]
global building solutions

Camí de Barberà, parc, 21
43424 Sarral (Tarragona) Spain
Tel. +34 977 890 510
info@noxifer.com
www.noxifer.com