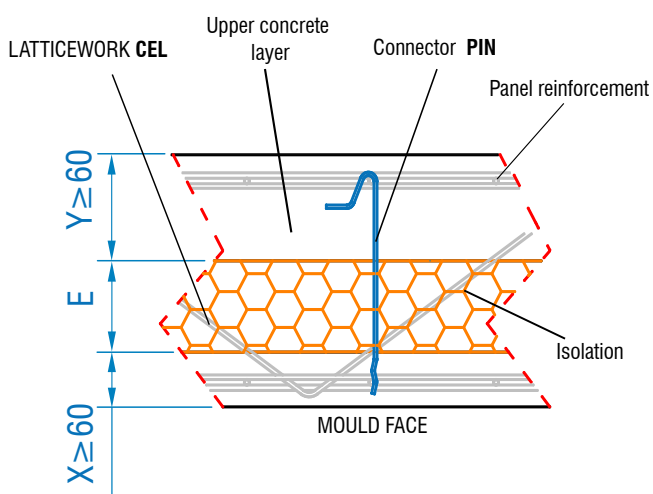


DETAIL PLACEMENT



Code	Description	B ⁽¹⁾ Total Length
PIN-110	Connector 110mm	110 mm
PIN-130	Connector 130mm	130 mm
PIN-160	Connector 160mm	160 mm
PIN-170	Connector 170mm	170 mm
PIN-200	Connector 200mm	200 mm
PIN-210	Connector 210mm	210 mm
PIN-250	Connector 250mm	250 mm

(1) Possibility of manufacturing different "B" lengths.

Material Stainless steel AISI304
3,35 kN
Connector capacity N_{rd}

Stainless steel connector for the manufacturing of precast concrete panels without thermal bridge (Sandwich panel). It is used as a complement of the Latticework CEL.

Connector PIN



1 1.1.-PIN connector selection geometry according to the prefabricated panel to execute and isolation thickness (E). General cases:

		SYMMETRICAL PANEL 40mm Isolation	SYMMETRICAL PANEL 80mm Isolation	ASYMMETRICAL PANEL 120mm Isolation	ASYMMETRICAL PANEL 160mm Isolation
TOTAL thickness Precast Panel	16 cm	PIN 130	--	--	--
	20 cm	PIN 160	PIN 170	--	--
	24 cm	PIN 200	PIN 200	PIN 210	--
	28 cm	PIN 240	PIN 240	PIN 240	PIN 250

It is considered a minimum concrete layer thickness of 60 mm.

The symmetrical panel is considered the worst case. In consequence, the PIN connector selection is valid for the asymmetrical

The options shown in the table, define the maximum length of the connector, being possible having shorter connectors in some cases.

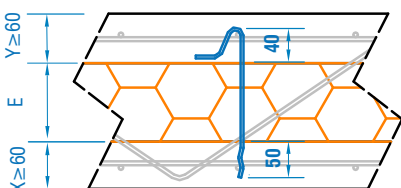
2 2.1.- Basic placement process:

2.1.1. Filling reinforcement and subsequent placement of the concrete layer on mould (minimum thickness 60mm).

2.1.2. Placement, according to payroll production, of latticework connectors CEL (**must be done before hardened concrete already poured**), his process is simultaneous to the placement of the insulation panels have been defined (alternate placement latticework-panel insulation) Recommended sealing joints between insulation panels if there is space between them.

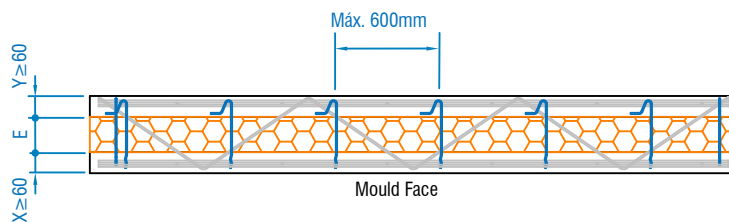
2.1.3. Placing armor top layer of the sandwich panel, placing the pin connectors (as sheet production) and subsequent filling of this layer.

3 3.1.- Application considerations



Mould Face

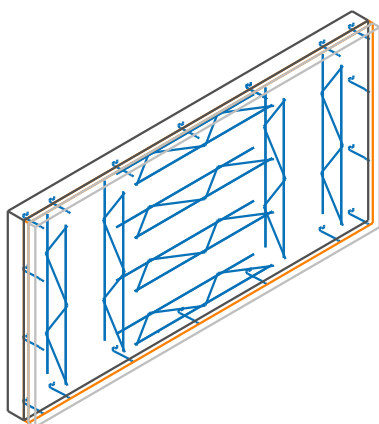
Necessary anchorage length for the PIN connector



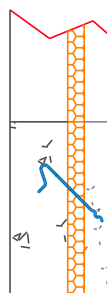
Mould Face

Maximum recommended distance between connectors: 600 mm

4 4.1.- Examples of use:

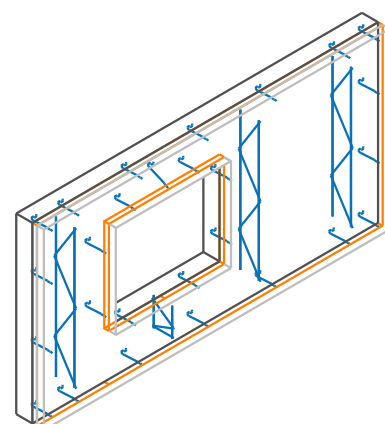


- Asymmetrical prefabricated panel. Final position: vertical.



PIN inclinado.

- Inclined position of the PIN in zones where it is not possible to place the latticework CEL since there is no space available*.



- Asymmetrical prefabricated panel. Final position: horizontal.

* It is allowed to use the connector PIN in zones where there is limited space in order to generate a similar connection as the latticework CEL