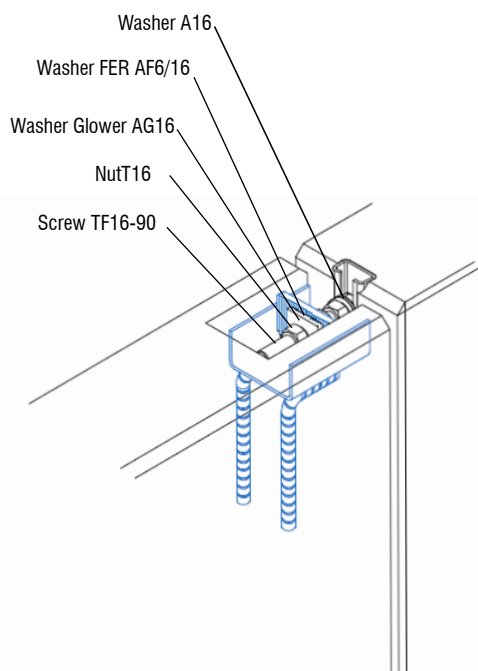
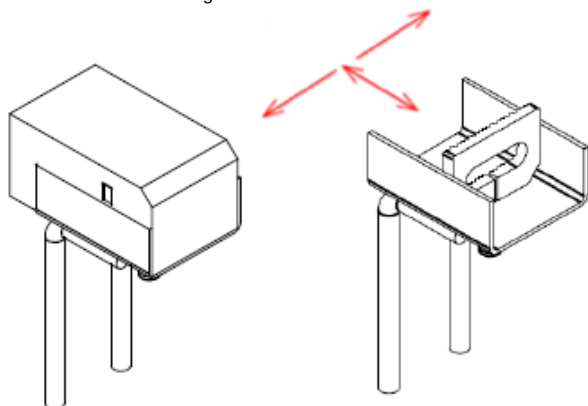


Piece of polyethylene
to avoid concrete filling



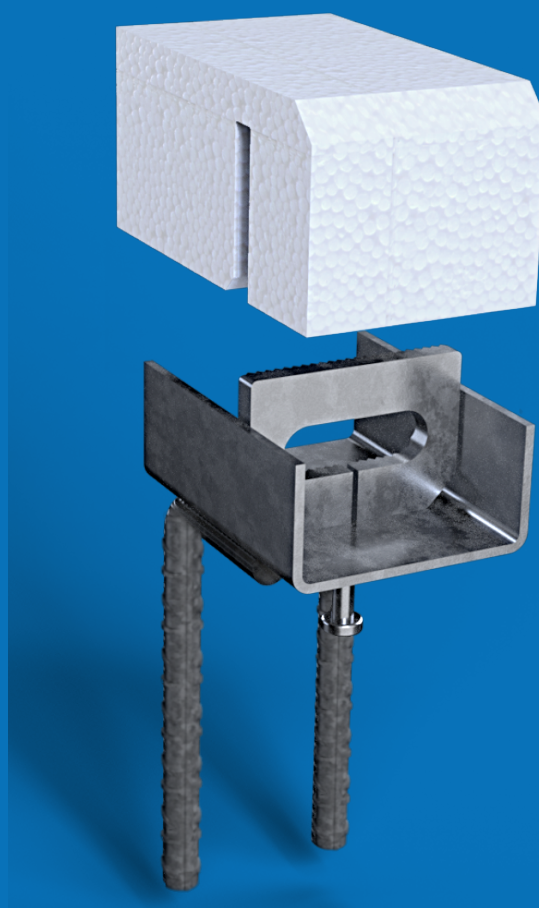
Code	Description
OCULFIX40	Hidden connection of panels in frontal position, from 140 mm

- (1) **Surface treatment:** Electroplated zinc coating
Service load: 1800 Kg (tension) y 700 Kg (shear)
Concrete: ≥ HA-35

1. Other surface treatment available under request.

Hidden accessory for the retention of precast concrete panels in frontal position from 140 mm thick. Mounting with FER TF16-90 screw, NOXI profile, A16 washers, Glower AG16 washers, T16 nuts and FER AF6 / 16 washer. With this system, assembly regulation is achieved in the 3 main axes.

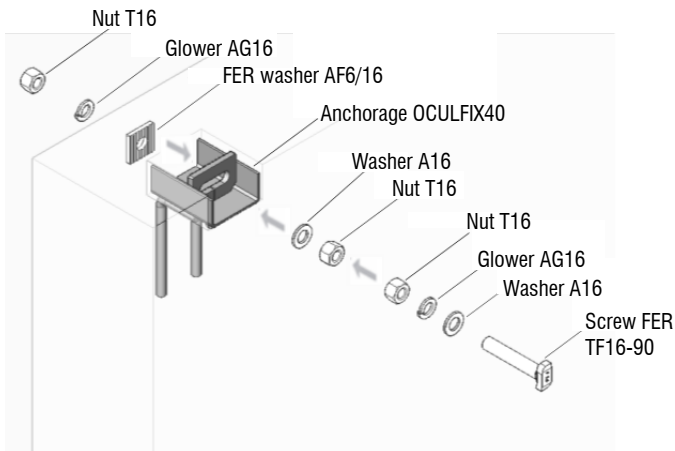
OCULFIX 40



www.noxifer.com

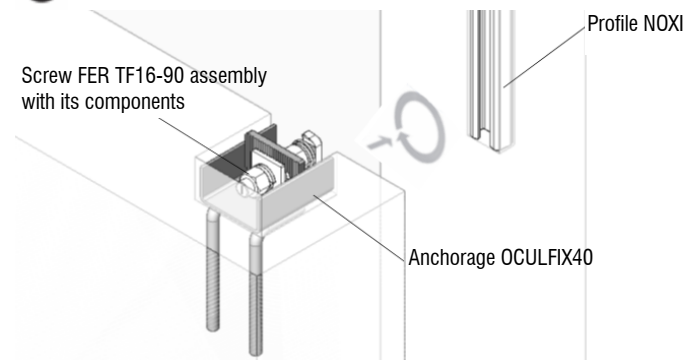


1



1.1.- Assemble the FER screw TF16-90 along with the nuts T16, the Glower washers AG16, washers A16 and washer FER AF6/16 through the slotted hole of the OCULFIX40, as shown in the figure.

2



2.1.- Position the element to be retained relative to the structural element.

2.2.- Loosen the outer T16 nut to free the FER TF16-90 screw.

2.3.- Insert the FER TF16-90 screw to the NOXI profile *. Make a 90° turn.

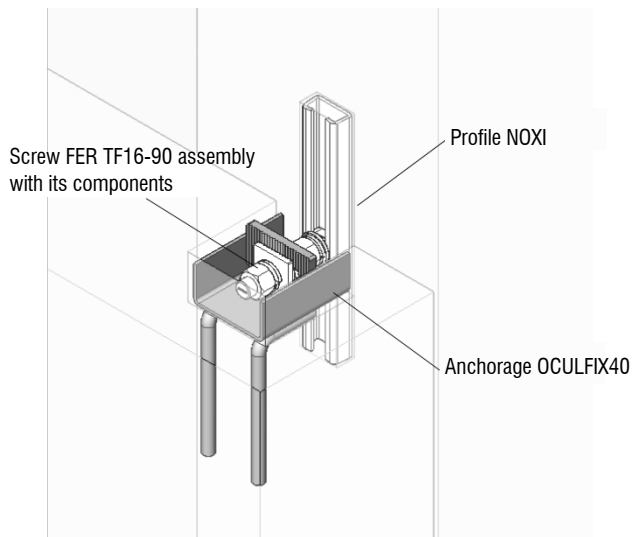
2.4.- Tighten the T16 nut closest to the NOXI profile.

2.5.- Tighten the intermediate and outer T16 nuts to fix the position of the element to be retained. The teeth of the FER washer and the anchorage must match to obtain a non-slip joint.

Glower washers should be completely flat.

* The profile can be NOXI C, R or S; according to loads.

3



3.1.- Check that all the elements are in the correct position

In order to continue the assembly sequence all the steps above described must be successfully overcome