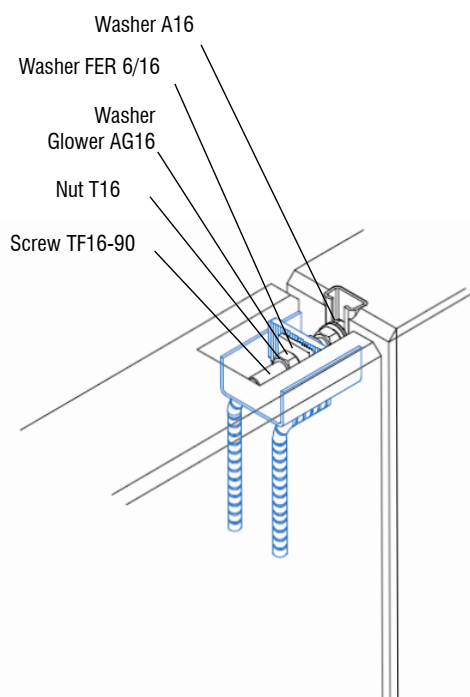
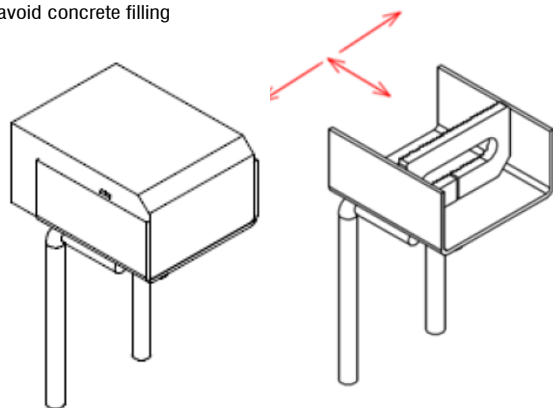
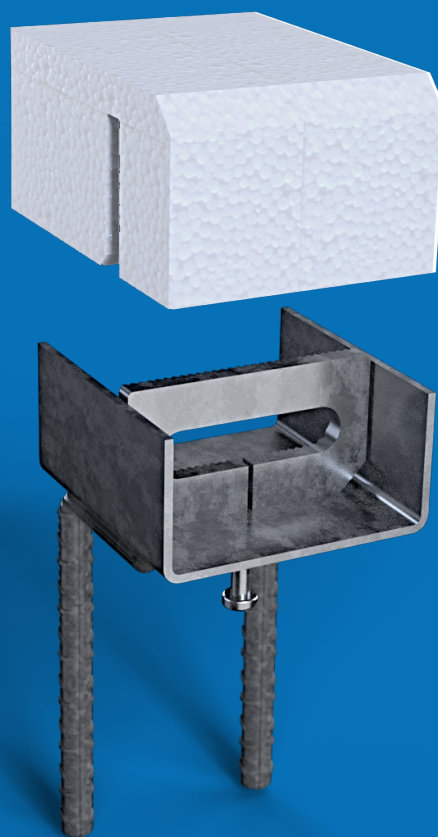


Piece of polyethylene  
to avoid concrete filling



Accessory for the retention of precast concrete panels in frontal position from 160 mm thick. Mounting with FER TF16-90 screw, NOXI profile, A16 washers, Glower AG16 washers, T16 nuts and FER AF6 / 16 washer. With this system, assembly regulation is achieved in the 3 main axes.

## OCULFIX 30



Code	Description
OCULFIX30	Hidden connection of panels. Panel thickness from 160 mm.

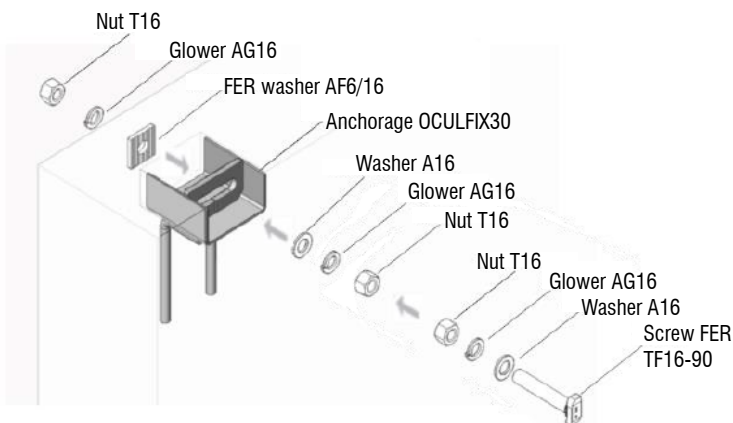
**(1) Surface treatment:** Electroplated zinc coating  
**Service load:** 1800 Kg (tension), 700 Kg (shear)  
**Concrete:** ≥ HA-35

1. Other surface treatment available under request.

[www.noxifer.com](http://www.noxifer.com)

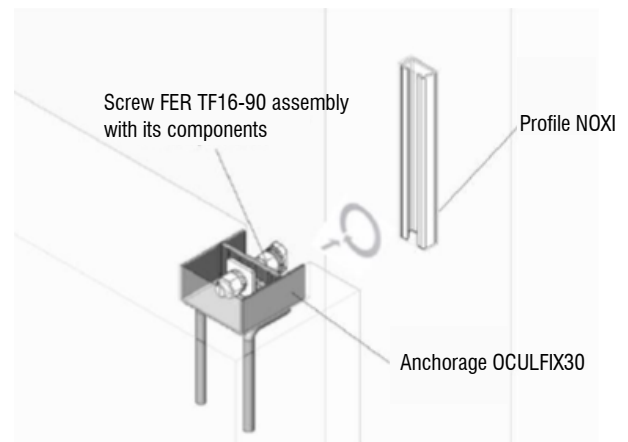


1



1.1.- Assembly the FER screw TF16-90 along with the nuts T16, the Glower washers AG16, washers A16 and washer FER AF6/16 through the slotted hole of the OCULFIX30, as shown in the figure.

2



2.1.- Position the element to be retained relative to the structural element.

2.2.- Loosen the outer T16 nut to free the FER TF16-90 screw.  
2.3.- Insert the FER TF16-90 screw to the NOXI profile \*. Make a 90° turn.

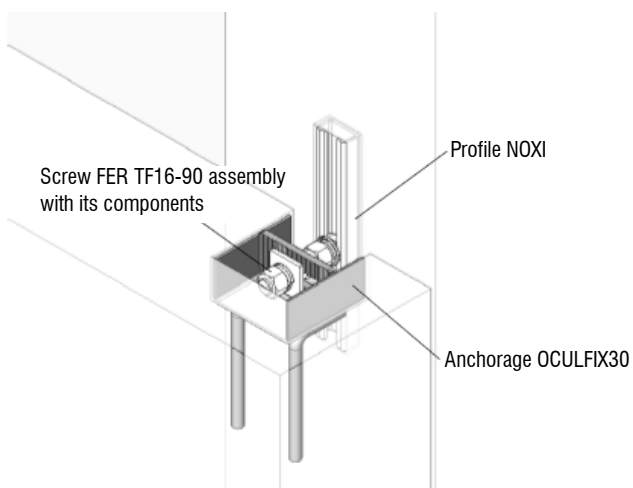
2.4.- Tighten the T16 nut closest to the NOXI profile.

2.5.- Tighten the intermediate and outer T16 nuts to fix the position of the element to be retained. The teeth of the FER washer and the anchorage must match to obtain a non-slip joint.

Glower washers should be completely flat.

\* The profile can be NOXI C, R or S; according to loads.

3



3.1.- Check that all the elements are in the correct position

*In order to continue the assembly sequence all the steps above described must be successfully overcome*