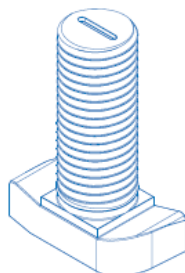
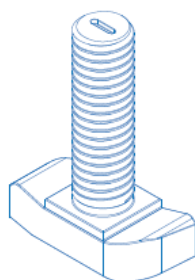


## Screw FER M16



| Code     | Description                       |
|----------|-----------------------------------|
| TF16-40  | Screw FER M16 total length 50 mm  |
| TF16-50  | Screw FER M16 total length 60 mm  |
| TF16-60  | Screw FER M16 total length 70 mm  |
| TF16-70  | Screw FER M16 total length 80 mm  |
| TF16-80  | Screw FER M16 total length 90 mm  |
| TF16-90  | Screw FER M16 total length 100 mm |
| TF16-100 | Screw FER M16 total length 110 mm |
| TF16-110 | Screw FER M16 total length 120 mm |
| TF16-120 | Screw FER M16 total length 130 mm |
| TF16-140 | Screw FER M16 total length 150 mm |
| TF16-220 | Screw FER M16 total length 230 mm |

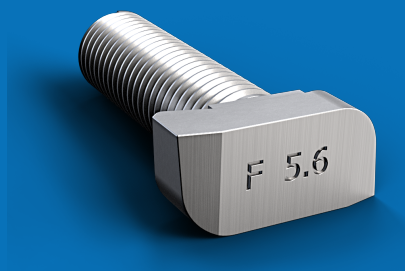
## Screw FER M12



| Code    | Description                      |
|---------|----------------------------------|
| TF12-40 | Screw FER M12 total length 50 mm |
| TF12-50 | Screw FER M12 total length 60 mm |
| TF12-70 | Screw FER M12 total length 80 mm |

M16 / M12 screws with special head for insertion with NOXI profiles, used for joining prefabricated modules with NOXI accessories.

# Screw FER M16



# Screw FER M12



[www.noxifer.com](http://www.noxifer.com)



## Washer FER

Accessory used to set the regulation on COFI, UPA, UPA-C, Oculfix 30 and Oculfix 40

| Code   | Description               | Hole  |
|--------|---------------------------|-------|
| AF6/12 | Washer FER thickness 6 mm | 13 mm |
| AF6/16 | Washer FER thickness 6 mm | 17 mm |
| AF8/16 | Washer FER thickness 8 mm | 17 mm |

## Washer A12 / A16

M12 and M16 washer used for mounting NOXIFER accessories.

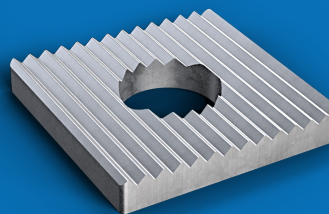
| Code | Description |
|------|-------------|
| A12  | Washer M12  |
| A16  | Washer M16  |

## Glower washer AG12 / AG16

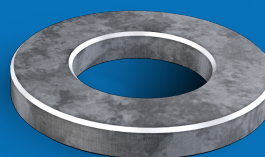
Washer M12 y M16 Glower for NOXIFER accessories.

| Code | Description       |
|------|-------------------|
| AG12 | Washer Glower M12 |
| AG16 | Washer Glower M16 |

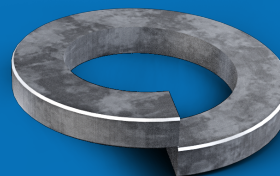
# Washer FER



# Washer A12 / A16



# Glower AG12 / AG16



[www.noxifer.com](http://www.noxifer.com)

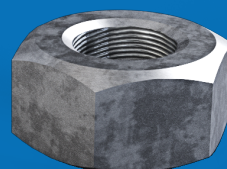


## Nut T12 / T16

Nut T12 and T16 used in the union of accessories by FER screws.

| Code | Description  |
|------|--------------|
| T12  | Metal nut 12 |
| T16  | Metal nut 16 |

# Nut T12 / T16



## Top GR

Complement used for the Oculfix10 accessory.

| Code | Description         |
|------|---------------------|
| GR15 | Top thickness 15 mm |
| GR10 | Top thickness 10 mm |
| GR 5 | Top thickness 5 mm  |
| GR 3 | Top thickness 3 mm  |

# Top GR

