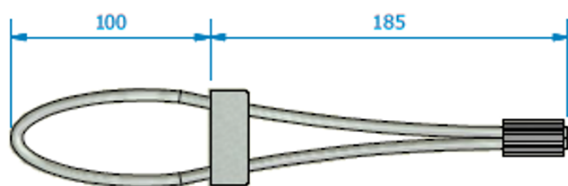
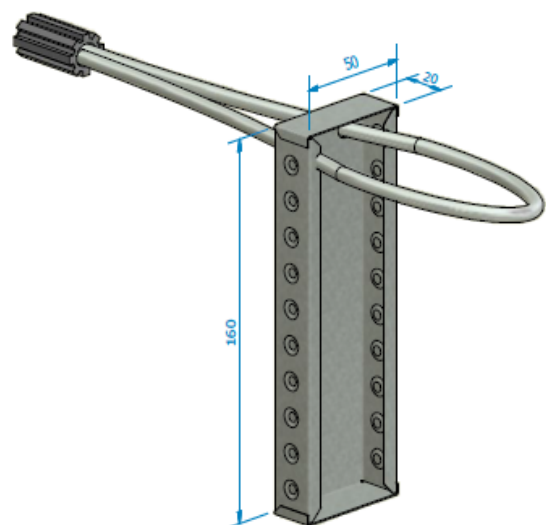


Accessory for connecting precast concrete panels to each other or to a column.

Wire Box LOOP-100



Code	Description	(1) L	Length	Width
LOOP-100	Wire Box	100mm.	160mm.	50mm.

(1) Possibility to manufacturing in different lengths under request



Material: Box: Steel sheet S235JR
Wire loop: High resistance
Hoop: Steel

Surface treatment: Galvanized

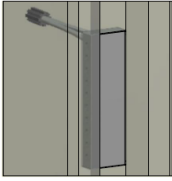
Maximum tension load: 15 kN

Security Coeficient: 1,5 from yield stress

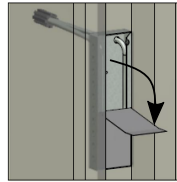
www.noxifer.com



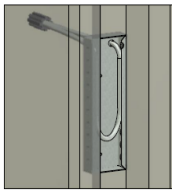
0 Step by step for the wire box LOOP-100:



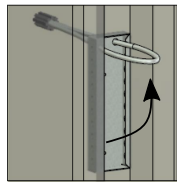
0.1 Closed box placed on the panel's mould.



0.2 Remove the seal from the box.

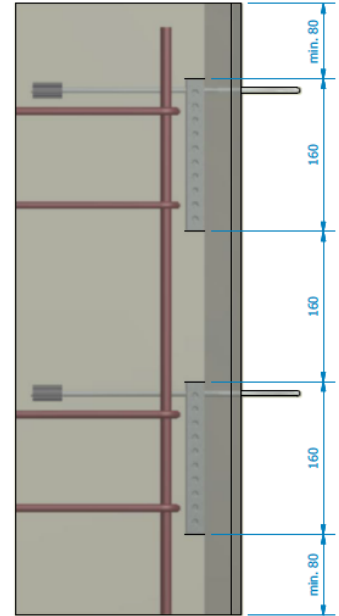
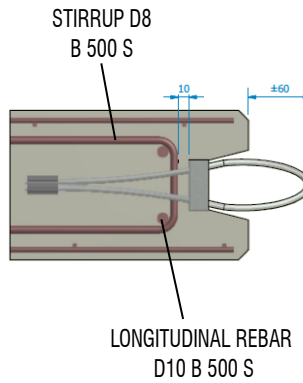


0.3 Once the box is opened, check the state of the wire.

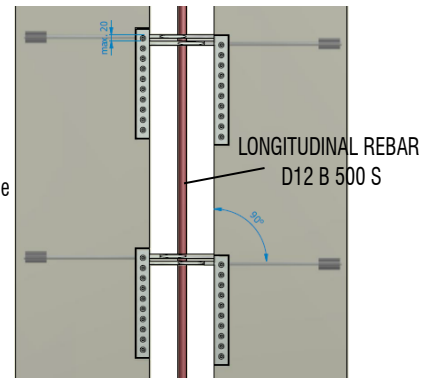
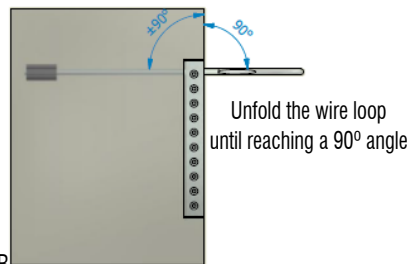
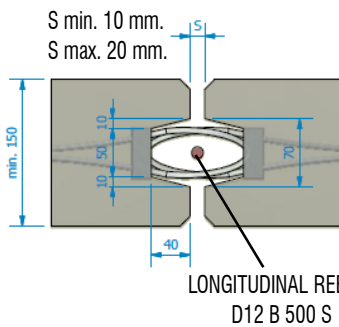


0.4 Unfold the wire loop until reaching a 90° angle.

1 INSTALLATION. Placement of the wire boxes on the panel and the reinforcement according to the next figures:

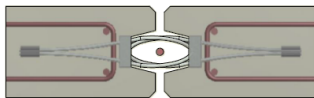


2 Wire box USE: Distances and elements in service phase:

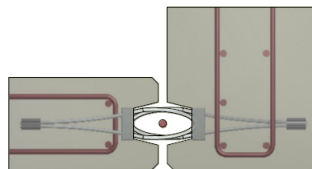


3 Wire box USES depending on the prefabricated elements to connect:

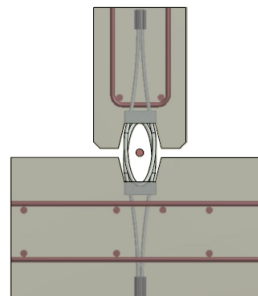
3.1 Continuous union of two panels:



3.2 Corner union between two panels:



3.3 "T" union between two panels:



3.4 Column-panel union:

