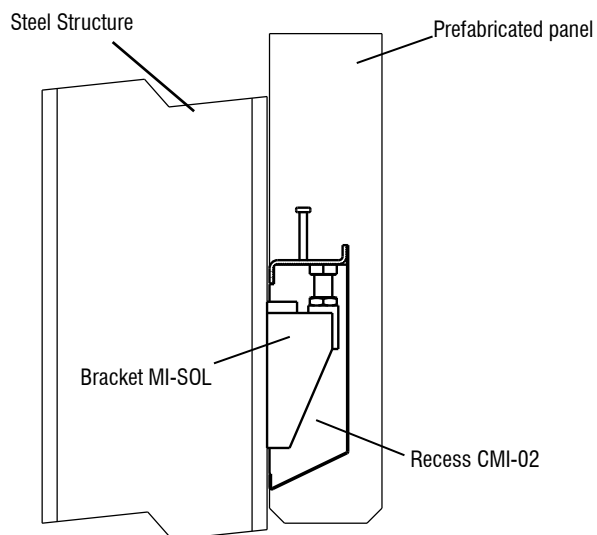




Welded bracket on the column and/or steel structure for supporting prefabricated elements (walls, beams....)



Code	Description	Service load SLS
MI-10-SOL	Industrial Bracket type 10	10Tn(100KN)

Material S275JR

Regulation Screw 8.8

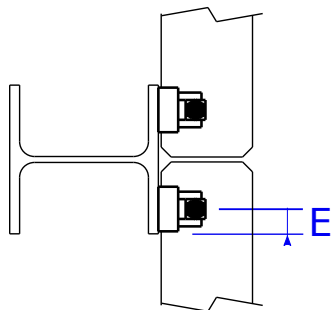
Security Coeficient 1,5 over the yield stress

Industrial bracket MI-SOL



1. DESIGN PRINCIPLES:

1.1. Distances to take into account:

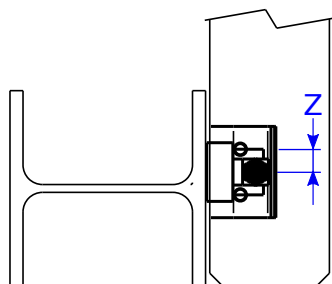
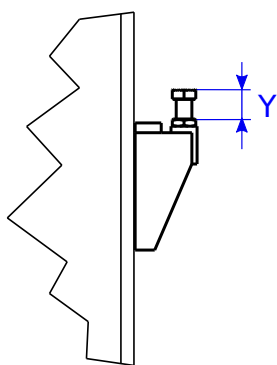


	MI-10-SOL
Minimum distance E	60 mm

E distance depends on the CMI recess that is used.
As a general rule, a minimum distance of 5cm is left between the exterior part of the panel and the exterior part of the CMI.

2. BRACKET REGULATION:

2.1. The bracket regulation is defined on the three main axes



DO NOT EXCEED UNDER ANY CONCEPT THAT THE VALUE OF Y IS GREATER THAN 60MM.

		MI-10-SOL
	Y Axis Regulation	50 mm
CMI-02-120	Z1 Axis Regulation	± 15 mm
CMI-02-145	Z2 Axis Regulation	± 22.5 mm
CMI-02-170	Z3 Axis Regulation	± 40 mm

Distance between the panel and the steel profile
 $20 < D < 49$ mm (with CMI-01)
 $0 < D < 49$ mm (with CMI-02)

3. BRACKET PLACEMENT: (Welding)

