

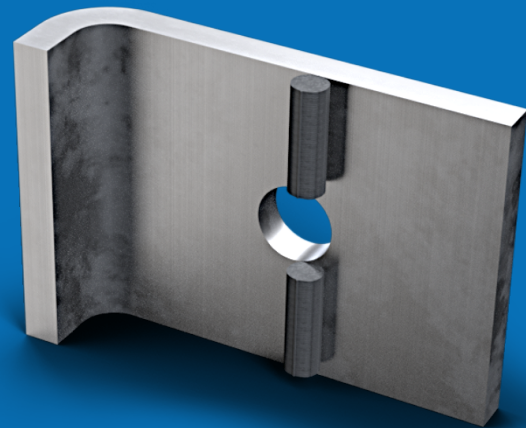
Code	Description	Ø Hole
GRAP17	Anchor for retaining concrete panels with the steel structure using screws M16.	17mm
GRAP13	Anchor for retaining concrete panels with the steel structure using screws M12.	13mm

(1) **Surface Treatment** Electroplated zinc coating
Service Load 1000 Kg

1. Possibility to supply in different surface treatment

Accessory for retaining precast concrete elements when having steel structure. Mounting with NOXI profiles, FER screws TF, Glower AG16 washers, A16 washer and T16 nut. With this system, assembly regulation is achieved in 2 of the 3 main axes.

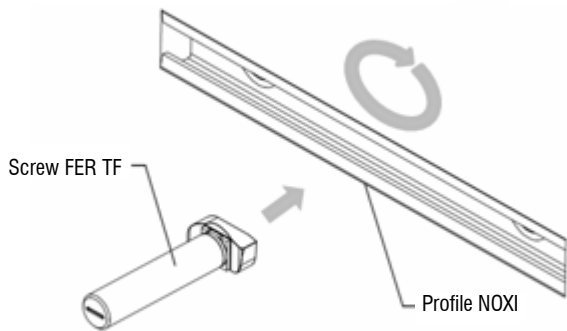
Anchor GRAP



www.noxifer.com



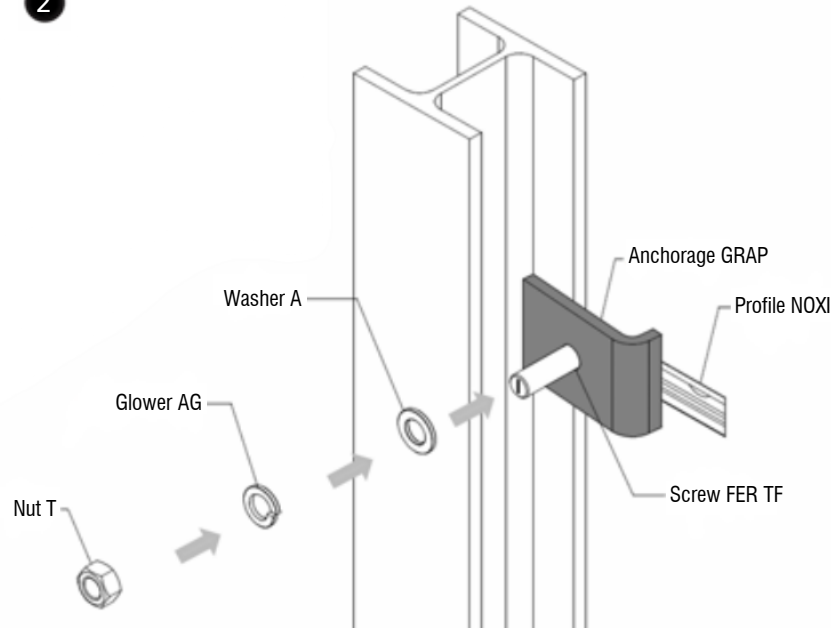
1



1.1.- Place the FER TF screws into the profiles* and turn it 90 degrees.

*The profiles can be: NOXI C, R or S; depending on the loads.

2



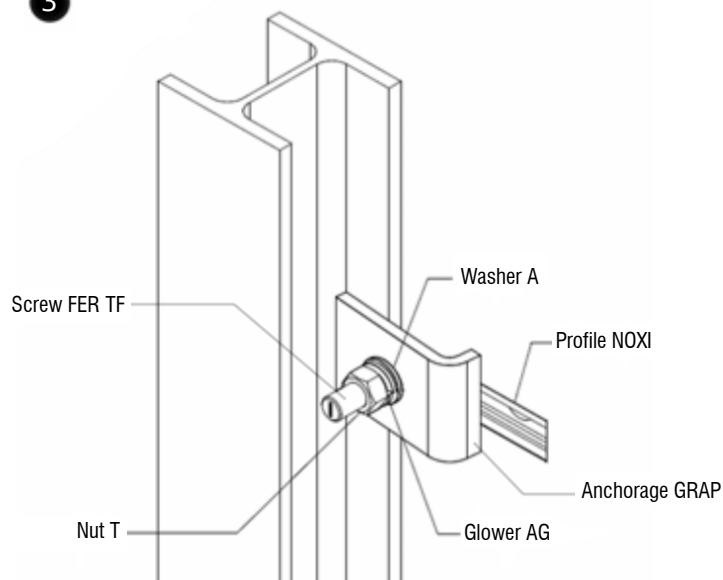
2.1.- Assembly of the screw and the GRAP anchorage through the hole. It is needed to keep the fold part of the GRAP in contact with surface where the NOXI profile is embedded while the flange of the anchorage retains the steel profile.

2.2 .- Set a 5mm neopren between the steel profile and the concrete panel.

2.3 .- Place the FER screw as close as possible to the steel profile.

2.4.- Fixing using Glower AG and nut T.

3



3.1.- Tighten the nut to finish the assembly. The Glower washer should be completely flat.

3.2.- Final check and assurance of nut tightening.

In order to continue the assembly sequence all the steps above described must be successfully overcome.