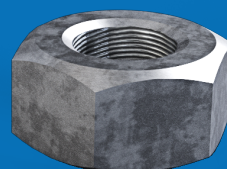


## Nut T12 / T16

Nut T12 and T16 used in the union of accessories by FER screws.

Code	Description
T12	Metal nut 12
T16	Metal nut 16

# Nut T12 / T16



## Top GR

Complement used for the Oculfix10 accessory.

Code	Description
GR15	Top thickness 15 mm
GR10	Top thickness 10 mm
GR 5	Top thickness 5 mm
GR 3	Top thickness 3 mm

# Top GR

