

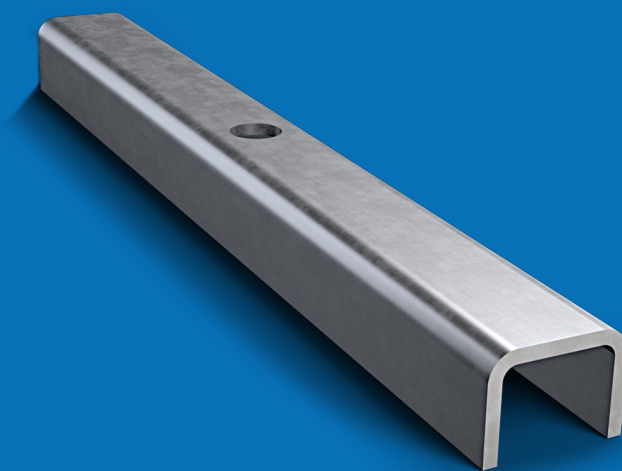
Code	Description
CTI	Inner anchor for tubular joists.

- (1) **Surface treatment:** Electroplated zinc coating
(2) **Service load:** 250 kg per support point

1. Other surface treatment available under request.
2. Separation between joists: 5 cm.

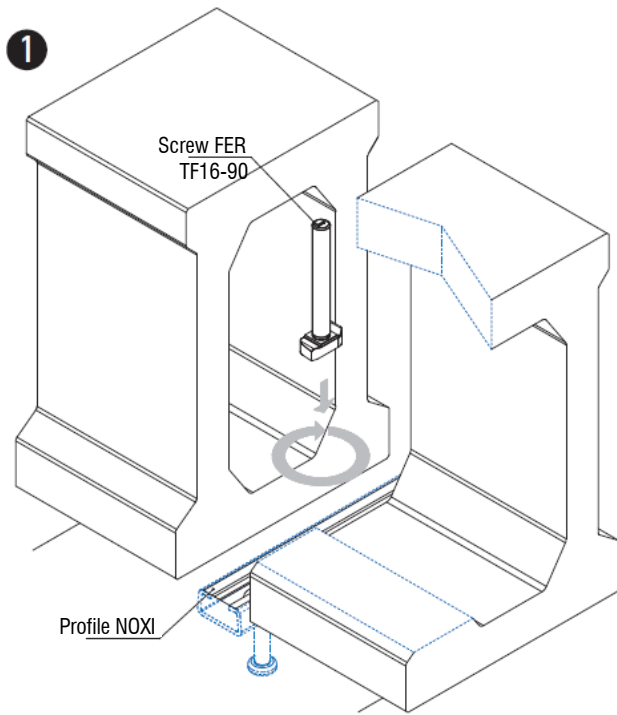
Accessories for the anti-roll of continuous concrete tubular joists. Assembly with NOXI profile, screw FER16-90, washer A16, washer Grower AG16 and nut T16. With this system, regulation is achieved in 2 of the 3 main axes.

Anchor CTI



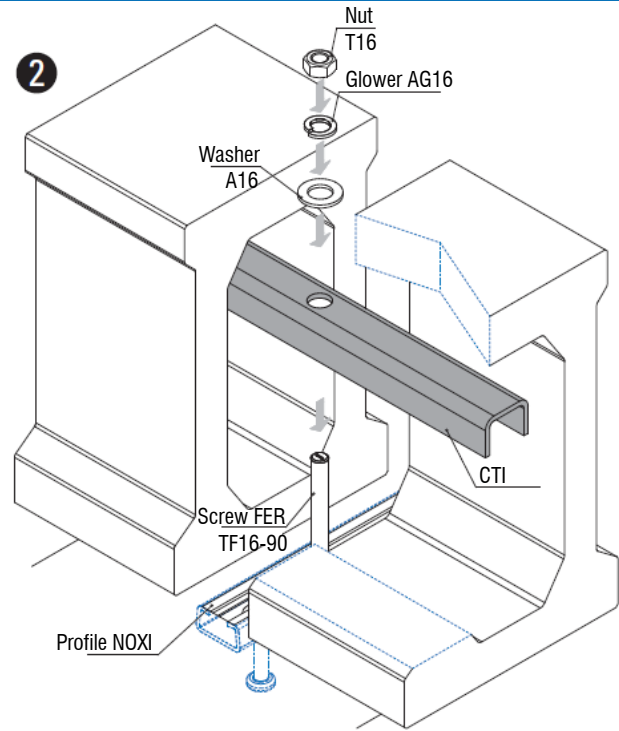
www.noxifer.com





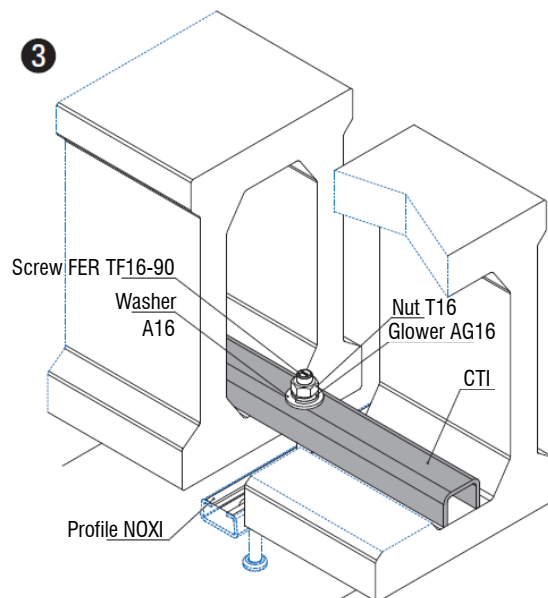
1.1.- Place the FER screw into profile and turn it 90 degrees.

* The profile can be: NOXI C, R or S; depending of loads



2.1.- Assembly of the screw and the CTE anchor through the $\varnothing 17$ hole.

2.2.- Fixing the system by washer A16, washer Glower AG16 and nut T16.



3.1.-Tighten the nut to finish the assembly. The Glower washer should be left completely flat.

3.2.- Final check and assurance of nut tightening.

In order to continue the assembly sequence all the steps above described must be successfully overcome.