

Code	Description	B
CTE40	CTE for tubular joist, 40mm base	40mm
CTE50	CTE for tubular joist, 50mm base	50mm
CTE60	CTE for tubular joist, 60mm base	60mm
CTE70	CTE for tubular joist, 70mm base	70mm

*Possibility of manufacturing in different base "B"

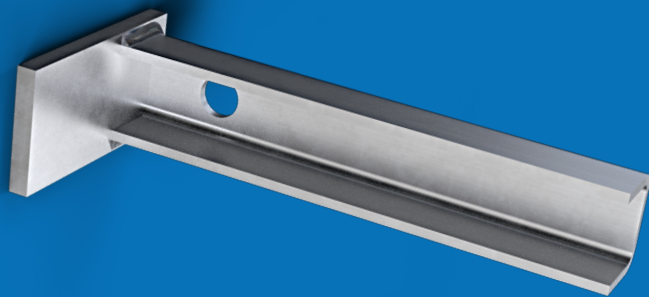
- (1) **Surface treatment:** Electroplated zinc coating
(2) **Service load:** 180 kg

1. Other surface treatment available under request.
2. Maximum separation of 5 cm between the screw and the tubular joist.

Accessory for fixing concrete tubular joists (end position). Assembled with NOXI profile, FER TF16 screw, A16 washer, AG16 Grower washer and T16 nut.

With this system, assembly regulation is achieved in 2 of the 3 main axes.

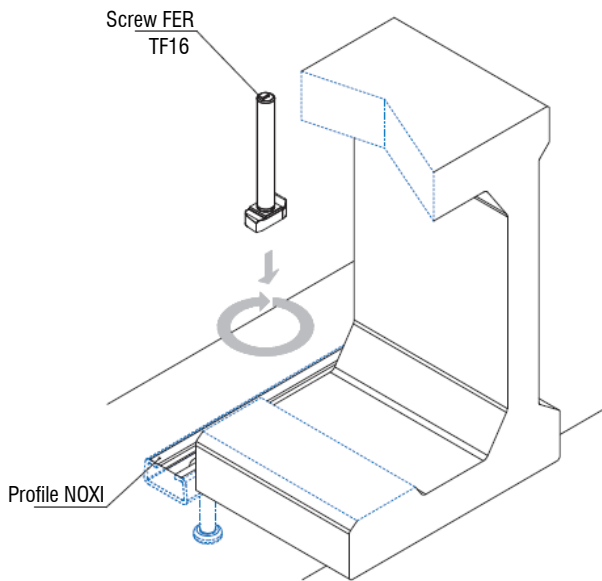
Anchor CTE



www.noxifer.com



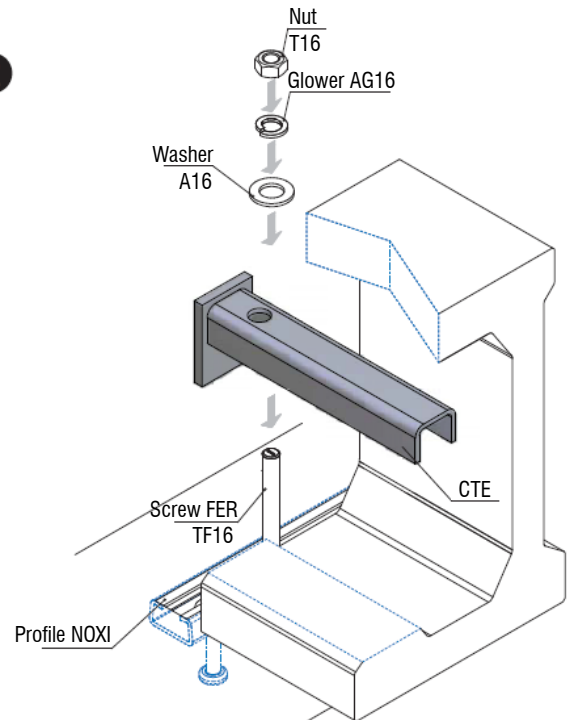
1



1.1.- Place the FER screw into profile and turn it 90 degrees.

* The profile can be: NOXI C, R or S; depending of loads.

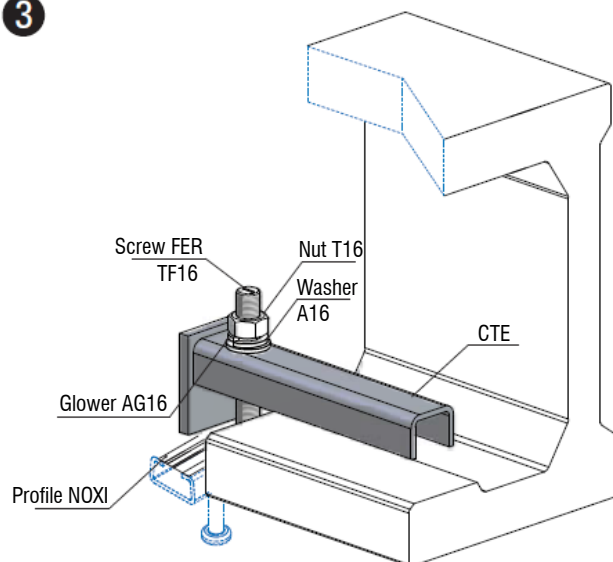
2



2.1.- Assembly of the screw and the CTE anchorage through the Ø17 hole.

2.2.- Fixing the system by washer A16, washer Glower AG16 and nut T16.

3



3.1.-Tighten the nut to finish the assembly. The Glower washer should be completely flat.

3.2.- Final check and assurance of nut tightening.

In order to continue the assembly sequence all the steps above described must be successfully overcome.