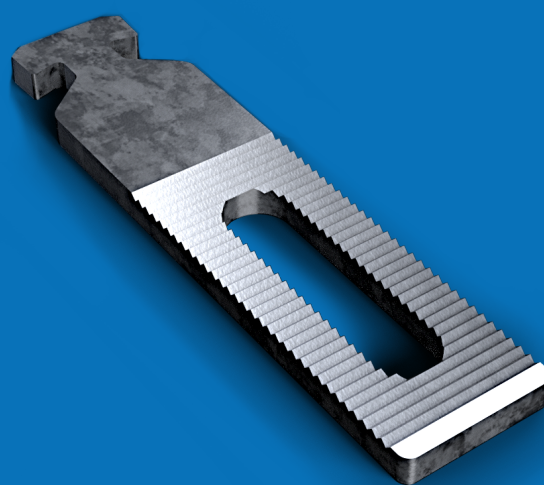


Accessory for retaining precast concrete elements. Mounting with NOXI profiles, FER screw TF16-40, FER washer AF6 / 16, Glower AG16 washer and T16 nut.

With this system, assembly regulation is achieved in the 3 main axes.

# Anchor COFI



Code	Description	L	Total length (L1)
COFI120	Anchor COFI length 120 mm	55 mm	120 mm
COFI168	Anchor COFI length 168 mm	100 mm	168 mm
COFI210	Anchor COFI length 210 mm	140 mm	210 mm
COFI243	Anchor COFI length 243 mm	175 mm	243 mm

\* Other lengths available under request.

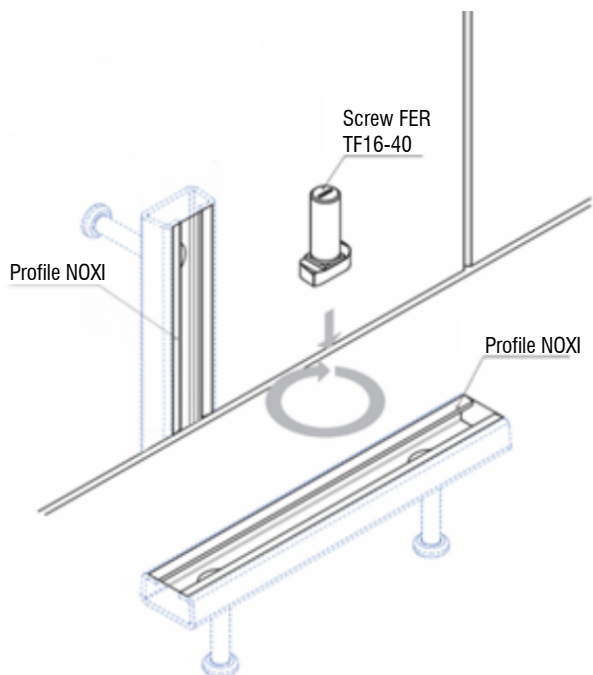
<b>(1) Surface treatment</b>	Electroplated zinc coating
<b>Service load</b>	1000 Kg
<b>Global Security Coefficient</b>	4.7

1. Possibility of supplying in different surface treatments.

[www.noxifer.com](http://www.noxifer.com)



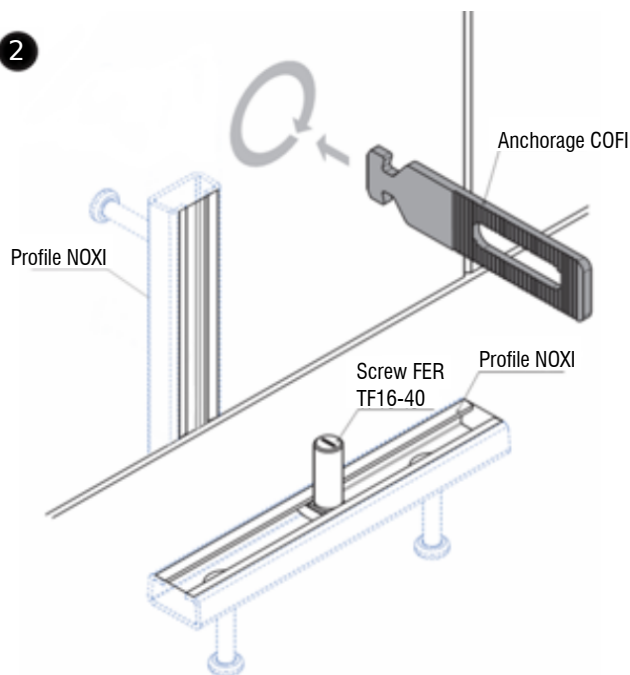
1



1.1.- Placement of the screw FER inside profile NOXI\* and 90° turn.

\*The profile can be: NOXI C, R o S; depending on the applied load.

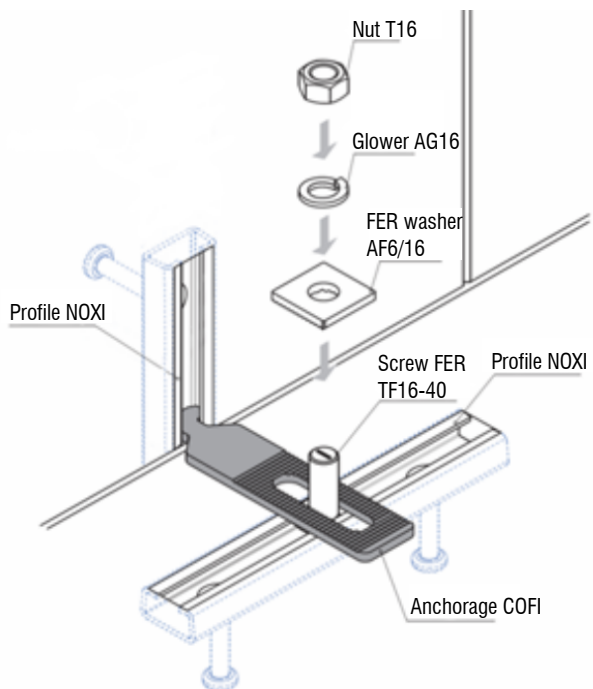
2



2.1.- Placement of the anchorage COFI inside profile NOXI and 90° turn.

2.2.- Assembly of the screw and the anchorage, keeping the serrated part upwards.

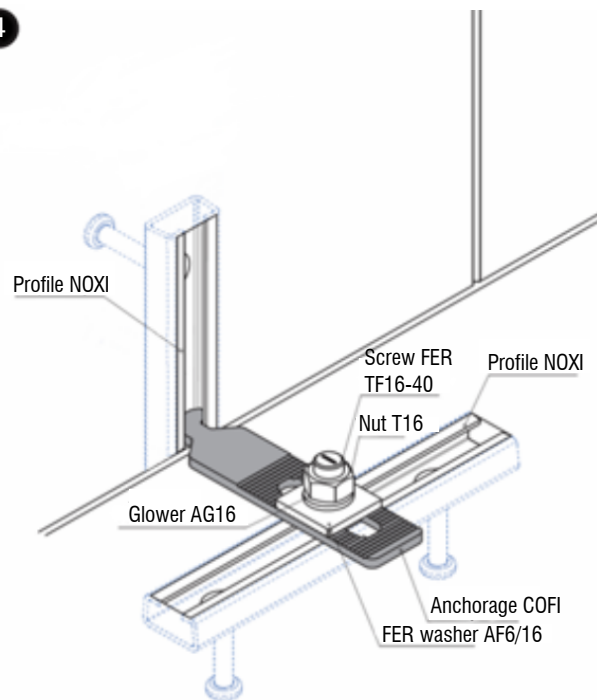
3



3.1.- Fixing of the system using the FER washer AF6/16, Glower washer AG16 and nut T16.

3.2.- The FER washer must coincide with the COFI's serrated part.

4



4.1.- Tight the nut until to finish the assembly. The Glower washer must be completely flat when finishing the assembly.

4.2.- Checking the correct fixing of all the elements.

*To continue the assembly sequence, all the steps described must be successfully completed.*