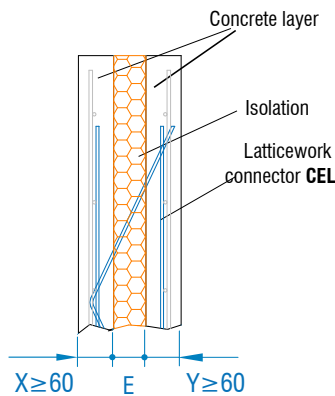
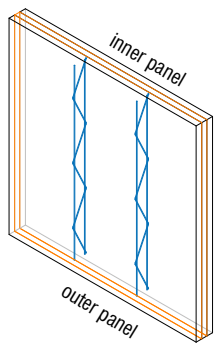


PERSPECTIVE PLACEMENT

DETAIL PLACEMENT



Code	Description	A ⁽¹⁾ Distance Between axis
CEL-90_L	Lattice of 90mm	90 mm
CEL-120_L	Lattice of 120mm	120 mm
CEL-130_L	Lattice of 130mm	130 mm
CEL-150_L	Lattice of 150mm	150 mm
CEL-160_L	Lattice of 160mm	160 mm
CEL-170_L	Lattice of 170mm	170 mm
CEL-180_L	Lattice of 180mm	180 mm
CEL-200_L	Lattice of 200mm	200 mm
CEL-220_L	Lattice of 220mm	220 mm
CEL-240_L	Lattice of 240mm	240 mm

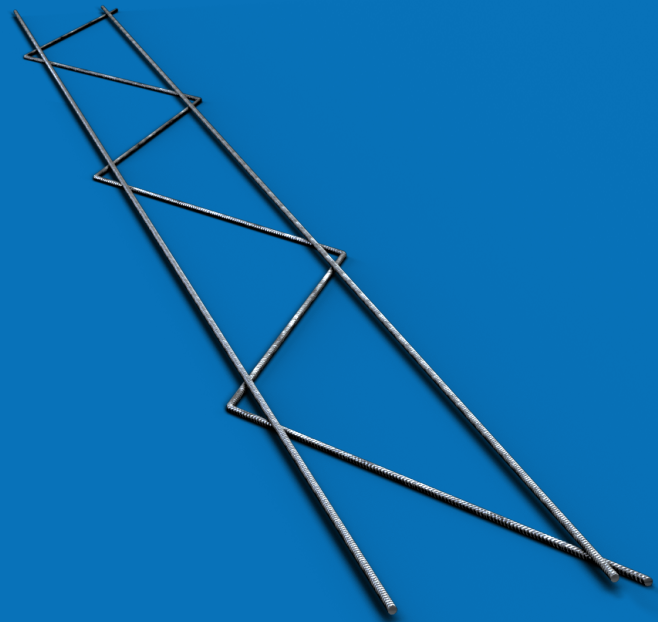
Length Options L: 1200mm, 1800mm, 2400mm.
 (1) Possibility of manufacturing different "A" heights.

Vertical bars material B500S
Diagonal bars material Stainless steel AISI304
Service Load F_{d,weld}** 5,6kN

** Capacity value considering 25mm of concrete cover. In case of less concrete cover, ask the technical department

Latticework connection between concrete layers, for sandwich walls without thermal bridge.

Latticework CEL



www.noxifer.com



1 1.1.-Latticework connector selection geometry according to the prefabricated panel to execute. General cases:

		SYMMETRICAL PANEL Horizontal position	SYMMETRICAL PANEL Vertical position	ASYMMETRICAL PANEL Horizontal position	ASYMMETRICAL PANEL Vertical position
TOTAL thickness Precast Panel	16 cm	CEL 90/L	Consult	CEL 90/L	Consult
	20 cm	CEL 130/L	Consult	CEL 120/L	CEL 120/L
	24 cm	CEL 170/L	Consult	CEL 160/L	CEL 160/L
	28 cm	CEL 210/L	Consult	CEL 200/L	CEL 200/L

Length of latticework connector, depending on the width of precast panel and the position of windows, doors,

Symmetrical panel: Panel concrete layers that compose it, are of equal thickness. Minimum thickness of layer is 60 mm..

Asymmetrical panel: Panel concrete layers that compose it, are of diferent thickness. Minimum thickness of layer is 60 mm.

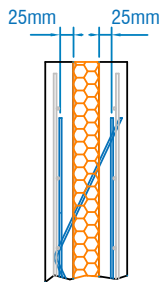
2 2.1.- Basic placement process:

2.1.1. Filling reinforcement and subsequent placement of the concrete layer on mould (minimum thickness 60mm).

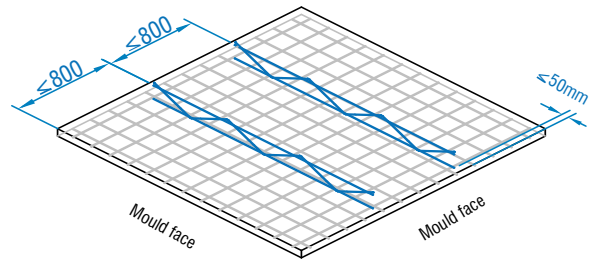
2.1.2. Placement, according to payroll production, of latticework connectors CEL (**must be done before hardened concrete already poured**), his process is simultaneous to the placement of the insulation panels have been defined (alternate placement latticework-panel insulation) Recommended sealing joints between insulation panels if there is space between them.

2.1.3. Placing armor top layer of the sandwich panel, placing the pin connectors (as sheet production) and subsequent filling of this layer.

3 3.1.- Application Considerations:

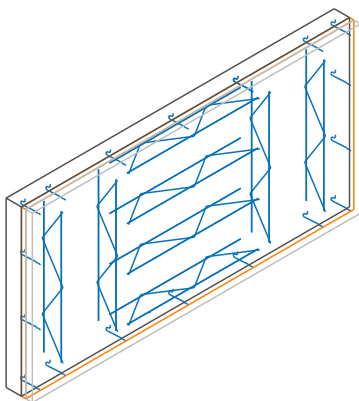


- Recommended coating /anchor latticework within each concrete 25 mm layer.
- Minimum value of 15 mm..

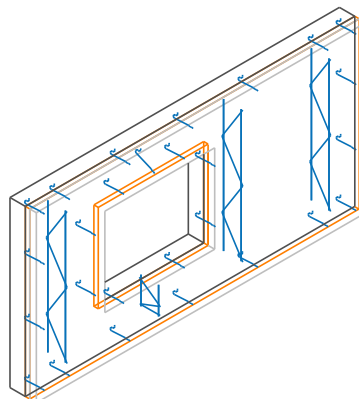


- Maximum recommended distance between lattices of 800 mm.
- Minimum vertical distance to edge panel 50 mm.
- Minimum horizontal distance to panel edge 100 mm..

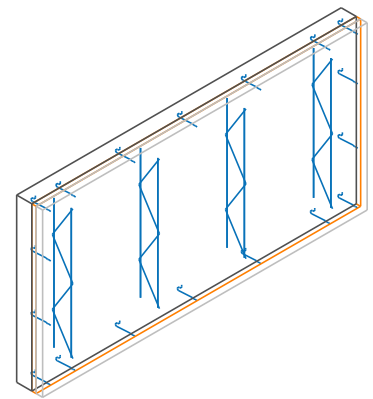
4 4.1.- Examples of use:



- Asymmetrical prefabricated panel. Final position: vertical.



- Asymmetrical prefabricated panel end position horizontally.



- Asymmetrical prefabricated panel end position horizontally.