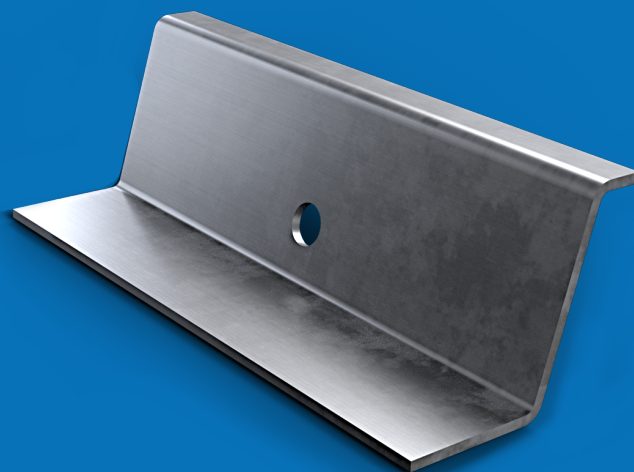


Screw TF12-70
Nut T12
Glower AG12
Washer A12

Code	Description
C200	Accessory for fixing continuous concrete joists

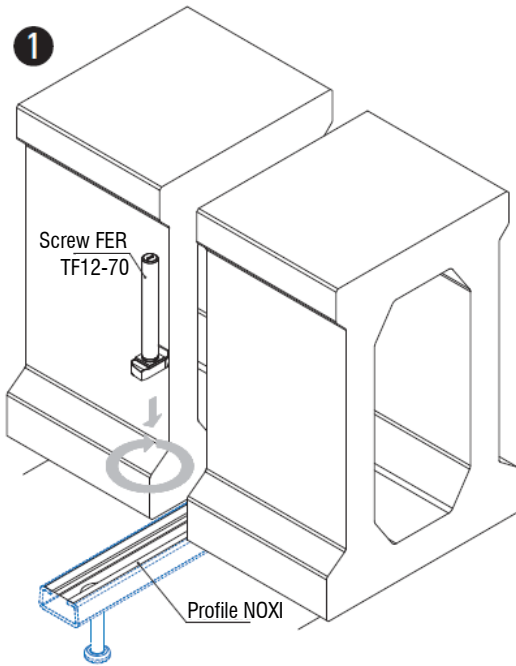
Accessory for anti-rolling continuous concrete beams. Assembled with NOXI profile, FER screw TF12-70, washer A12, Grower washer A12 and nut T12. With this system, assembly regulation is achieved in 2 of the 3 main axes.

Anchor C200



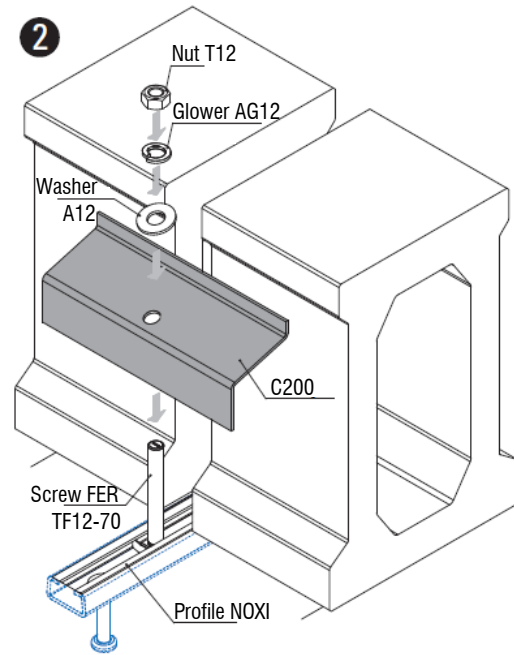
(1) Surface treatment: Sendzimir Galvanized
Service load: 100 Kg per support point

1. Other surface treatment available under request.



1.1.- Place the FER screw into profile and turn it 90 degrees.

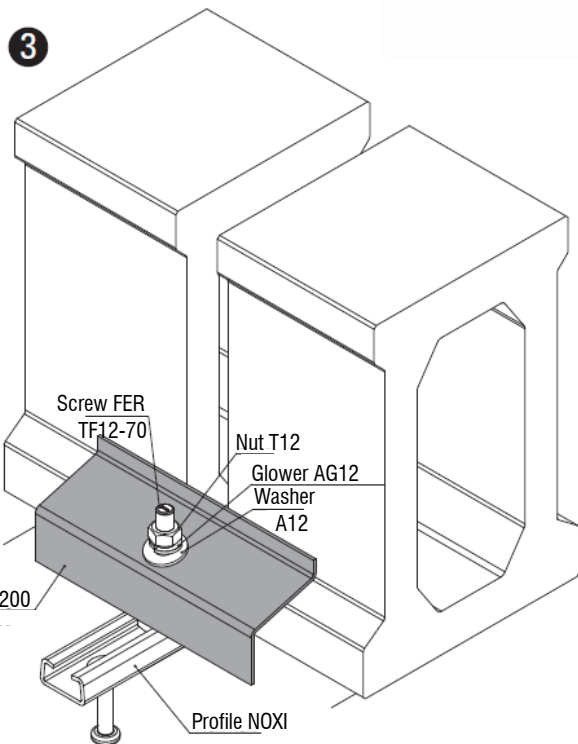
*The profile can be: NOXI C, R or S; depending on the loads.



2.1.- Assembly of the screw and the anchor through the hole $\varnothing 13$, leaving the shorter wing of the anchor in contact with the beam.

2.2.- The FER screw must be in contact with the concrete beam to be fixed.

2.3.- Fixing by washer A12, Glower washer AG12 and nut T12.



3.1.- Tighten the nut to finish the assembly. The Glower washer should be left completely flat.

3.2.- Final check and assurance of nut tightening.

In order to continue the assembly sequence all the steps above described must be successfully overcome.